

Solar Digital Thermometers



APPLICATIONS

Food industry. Machine building and general plant construction.

DESCRIPTION

Solar power operated thermometers. They are fitted with a wire sensor that provides accurate temperature indication. Light level above 100LUX. A back-up battery circuit provides power for a constant display when light level decreases. Bright and easy to read LCD display.

GENERAL SPECIFICATIONS

Case: corrosion resistant SS304 case and bezel. Designed and constructed to provide a hermetic seal IP65, which prevents fogging and damage caused by moisture to the working components.

Dial: LCD Display. It offers accurate indication of °C and °F scales.

External Reset: standard on all process grade solar digital thermometers. A screw in the back of case, on the PCB, allows to field calibrate the thermometer. This feature guarantees maximum accuracy at a selected area of temperature range.

Window: clear and strong glass, gasketed to maintain weather tight integrity.

Stem: SS304 welded at tip and case connector to prevent leakage. Different stem lengths are available.

Wire: black PVC.

NTC Element: an extremely responsive temperature sensing element which has been carefully sized and tested in order to ensure continued accuracy.

Standards: QualityWell manufactures solar digital thermometers in compliance with the ISO 9001:2008 norm.

Accuracy: see the table 1.

One Year Warranty: the units are guaranteed to be free from defects in material and workmanship under normal use and service.

Table 1. Accuracy

Range	Temp.	Acc.
-50/70 °C	-50/-20°C	±2°C
	-19.9/50°C	±1°C
	50.1/70°C	±2°C
-58/158 °F	-58/-4°F	±3.6°F
	-3.9/122°F	±1.8°F
	122.1/158°F	±3.6°F
-50/150 °C	-50/-20°C	±2°C
	-19.9/50°C	±1°C
	50.1/70°C	±2°C
	100.1/150°C	±3°C
-58/302 °F	-58/-4°F	±3.6°F
	-3.9/122°F	±1.8°F
	122.1/212°F	±3.6°F
	212.1/302°F	±5.4°F

STANDARD FEATURES

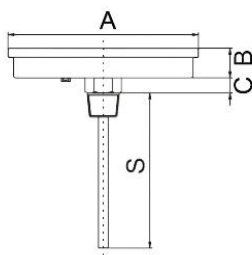
Measuring element:	NTC sensor
Case:	SS304
Bezel:	SS304, sealed type
Nominal Size:	80mm and 100mm
Dial:	PVC
Display:	LCD
Reset:	on the PCB in the back of the case
Window:	gasketed glass
Hermetic seal:	IP65 only for the thermometer with bezel
Stem:	SS304, diameter 6,35mm, different lengths available, plain or with thread
Wire:	1.2mt, PVC
Connection:	back, bottom and every angle
Thread:	¼" and ½" BSP or NPT or plain stem
Accuracy:	See Table 1
Ranges:	-50/70°C/°F, -50/70°C, -58/158°F -50/150°C/°F, -50/150°C, -58/302°F
Switch:	ON/OFF, °C/°F
Power:	Solar & battery
Resolution :	0.1°C (0.1°F)

LCD Display : 3 1/2 Digit
Reaction Time: 10s

Models:

DSTT300

3"Dial, SS304 Case&Stem
 6"Stem, Back connection
 1/2"NPT, C/F switch
 Glass window

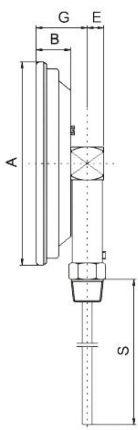


DSTT TYPE

DIAL SIZE	A	B	C	CONN	HEX
3"	77.0	15.0	10.0	1/2"NPT	21
4"	109.0	20.0	10.0	1/2"NPT	21
5"	127.0	19.5	10.0	1/2"NPT	21

DSTI300

3"Dial, SS304 Case&Stem
 6"Stem, Bottom connection
 1/2"NPT, C/F switch
 Glass window

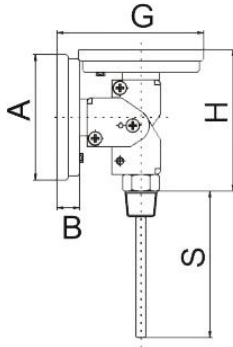


DSTI TYPE

DIAL SIZE	A	B	E	CONN	HEX
3"	83.5	22.0	11.0	1/2"NPT	21
4"	110.0	25.0	11.0	1/2"NPT	21
5"	135.0	23.0	11.0	1/2"NPT	21

DSTA300

3"Dial, SS304 Case&Stem
6"stem, Adjustable
connection
1/2"NPT, C/F switch
Glass window

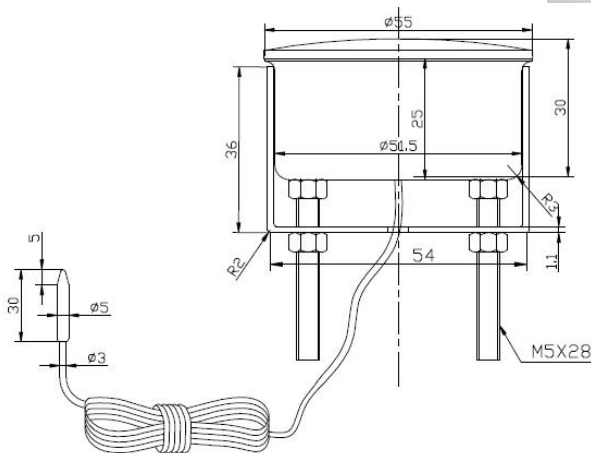


DSTA TYPE

DIAL SIZE	A	B	H	G	CONN
3"	77.0	15.0	97.0	93.5	1/2"NPT
4"	109.0	20.0	98.0	116.0	1/2"NPT
5"	127.0	19.5	101.0	125.5	1/2"NPT

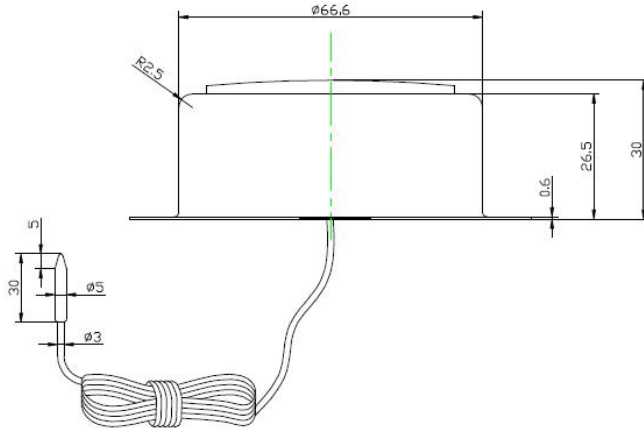
DST2003S

2"dial, SS304 Case, SS304 Bulb
U-clamp, Back connection
1.2 meter wire, C/F switch
PC lens



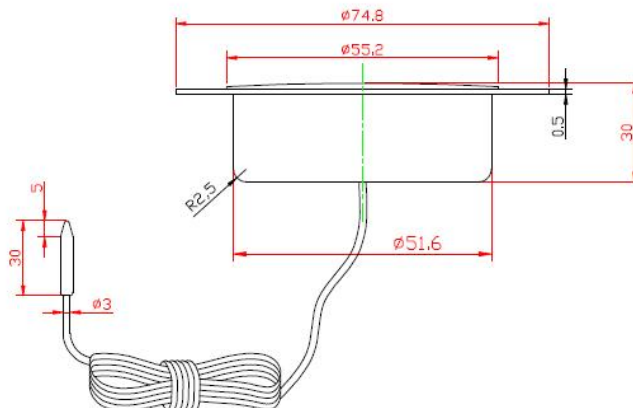
DST2002S

2"dial, SS304 Case, SS304 Bulb
Back flange, Back connection
1.2 meter wire, C/F switch
PC lens



DST2001S

2"dial, SS304 Case, SS304 Bulb
Front flange, Back connection
1.2 meter wire, C/F switch
PC lens



DST1001S

ABS

113*16*26mm(L*H*W)

SS304 Bulb

1.2 meter wire

C/F switch

