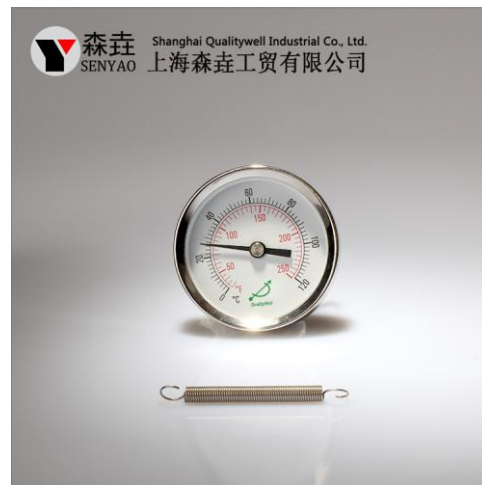


## Surface Thermometers – Pipe Thermometers

### Description

The surface thermometers are designed to measure surface temperatures on a wide variety of surfaces (pipes, tubes, cylinders, flat metal) and are available in different configurations. They provide an accurate reading and are easy to install. Suitable for heating, air conditioning, wastewater and industrial process applications.



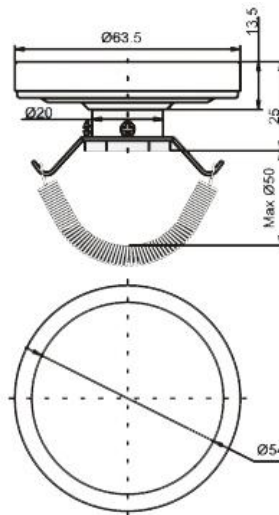
## PIPE THERMOMETERS

### Standard features

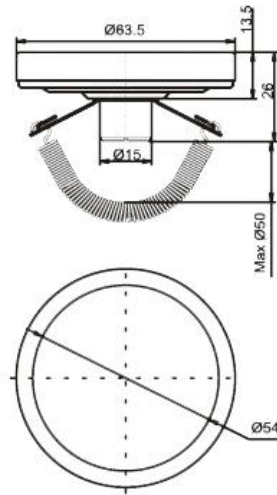
<b>Dial:</b>	2.5"(63mm) aluminum with black scale
<b>Case:</b>	SS304
<b>Lens:</b>	Glass
<b>Ring:</b>	SS304
<b>Spring:</b>	SS 304
<b>Pointer:</b>	Aluminum, painted black
<b>Accuracy:</b>	±3% of full scale
<b>Range:</b>	-40/40°C/°F, 0-115°C/°F, 0-250°C/°C
<b>Warranty:</b>	1 Year
<b>Other ranges available on request</b>	

### MODELS:

#### ST221SS-1



## ST221SS-2



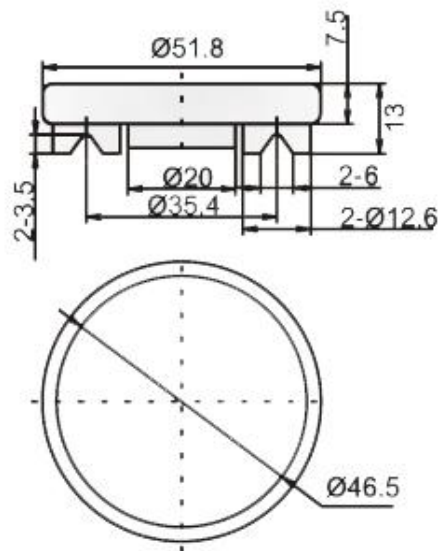
## SURFACE MAGNET THERMOMETERS

### Standard features

<b>Dial:</b>	2"(50mm) aluminum with black scale
<b>Case:</b>	Black Steel
<b>Lens:</b>	Glass
<b>Ring:</b>	SS304
<b>Magnet:</b>	2 pcs
<b>Pointer:</b>	Aluminum, painted black
<b>Accuracy:</b>	±3% of full scale
<b>Range:</b>	0-20/120°C/°F, -15/250°C/°F, 10-400°C/°F
<b>Warranty:</b>	1 Year
<b>Other ranges available on request</b>	

### MODEL:

### ST200DM



### Standard features

<b>Dial:</b>	2.5"(63mm) aluminum with black scale
<b>Case:</b>	SS304
<b>Lens:</b>	Glass
<b>Ring:</b>	SS304
<b>Magnet:</b>	1 pc
<b>Pointer:</b>	Aluminum, painted black
<b>Accuracy:</b>	±3% of full scale
<b>Range:</b>	0-20/120°C/°F, -15/250°C/°F, 10-400°C/°F
<b>Warranty:</b>	1 Year
<b>Other ranges available on request</b>	

### MODEL:

**ST221SM**

